



Linear 70/100 - Sliding Folding Walls

Offices, schools, universities, leisure, sport centres

Linear 70/100 is a hinged system providing sound reduction from 25dB to 48dB.

Flexible top hung or floor supported system. Floor supported option features a unique threshold to address trip hazard concerns.

Single or double wing available with access gained via the door in the last leaf of each wing. Easy operation of the screen is achieved by the use of high specification rollers and track.

A bespoke hinged jamb allows unrivalled system adjustment yet still allows a concealed wall fixing. Sound performance is achieved by specialised manufacturing techniques including high specification acoustic infill, unique labyrinth profiles and multipronged acoustic seals.

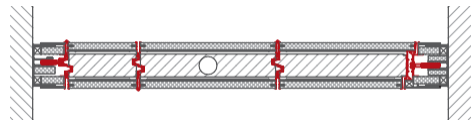
Available in a range of finishes including laminate, white marker, veneer, digi-art or primed for onsite decorating. All hardware is finished in hardwearing, compliant natural anodised aluminium or stainless steel.

Technical Specifications

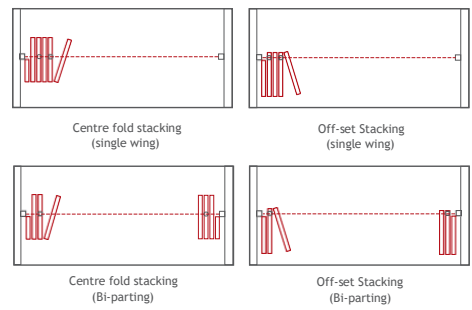
Nominal thickness	70 mm / 100 mm
Max. panel width:	
Centre hung	850 mm
End hung	700 mm
Max. clear opening height	3600 mm / 3100 mm
Approx. hanging weight	22 - 47 kg/m ²
Sound insulation range	25 - 48 dB

- Acoustically rated 25db - 48db
- Vast selection of finishes - including veneer, laminate, melamine etc
- Single wing or Bi parting stacking
- Can be top hung or floor supported
- Supplied as standard with full height pass door

Abutment Detail



Stacking Options



Construction

